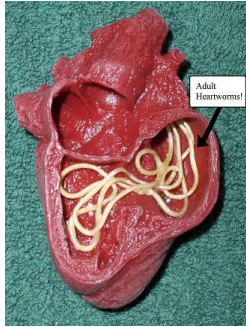


# HEARTWORM



**What is it?** Heartworm is a serious and potentially fatal disease for a pet in the U.S., as well as other parts of the world. It is caused by foot-long worms that live in the heart, lung, and associated blood vessels.

## **Who does it affect and how?**

Heart worm affects dogs and cats . Dogs are a natural host, which

means the heartworm live inside the dog and mature into adults, mate and reproduce. Cats are very differently affected by heartworm disease than dogs because they are atypical hosts. Therefore, most worms do not survive to the adult stage. Unfortunately, this typically means heart worms can go undiagnosed in cats. Heart worm in transmitted by mosquitos from animal to animal.

**What are symptoms?** Dogs in the early stages of infection show no symptoms at all, which is why it is important to test them yearly. The longer the infection persists, more signs will show. Such signs include, mild persistent coughing, reluctance to exercise, fatigue, decrease appetite, and weight loss. Symptoms in cats are either very subtle or very dramatic. Coughing, asthma– like attacks, vomiting, lack of appetite, weight loss are all common in cats. Unfortunately, the first sign can sometime be that the cat suddenly collapses or suddenly dies.

**Prevention vs Treatment?** Heartworm is easier and cheaper to prevent than to treat. Prevention includes monthly use of products like Heartgard and/or Sentinel. Dogs must be tested negative for heartworm before receiving a preventative. Treatment for dogs can be long, expensive, and stressful. The medications used to treat dogs is not effective for cats, therefore the only ways to treat heartworm in cats is to prevent it with products like Revolution.

# PRODUCT SUMMARY

**FELINE AND CANINE FRONTLINE PLUS:** FOR FLEAS AND TICKS

**FELINE REVOLUTION:** FOR FLEAS, EAR MITES, ROUNDWORMS AND HOOKWORMS

Parasite treatments; medicated liquid applied to the skin of the shoulder blades, works through your pet's natural skin oils to systemically treat and protects them for 1 month. Do not bathe the animal for 48 hours before or after applying these products. In advanced cases of ear mite and flea infestations, your pet may need to be treated for a second month. If there are multiple animals in the home, we recommend that all animals be treated at the same time to completely eradicate the parasites. Frontline Plus and Revolution can be used one at a time, as needed, or as a regular preventative.

**CANINE SENTINEL:** FOR FLEAS, HEARTWORMS, HOOKWORMS ROUNDWORMS AND WHIPWORMS.

Sentinel is a flavored tablet that is given orally every month. It is the only oral medication which eliminates and guards against roundworms, hookworms, whipworms, fleas, and heartworms for dogs. Must be previously tested negative for heartworms.

**CANINE HEARTGARD:** FOR HEARTWORMS

Is a monthly, beef flavored chewable that prevents heartworm in dogs. The use of Heartgard every month as directed kills immature heartworms introduced to the dog in the last 30 days, preventing the development of adult heart worms. Must be previously tested negative for heartworms.

**FELINE AND CANINE DRONTAL:** FOR TAPEWORMS, ROUNDWORMS AND HOOKWORMS

Broad-spectrum dewormer, tablets are given according to weight; typically a 4-8 pound cat will take one pill. For best results, treat all household cats for parasites at the same time. Give one dose to each cat and completely change all litter pans upon deworming; repeat this process three weeks later to completely eliminate all life stages of the worms.

# T.A.R.A.

THE ANIMAL RIGHTS ALLIANCE, INC.

---

LOW-COST SPAY/NEUTER CLINICS  
FOR DOGS AND CATS

## PARASITE MANAGEMENT

FOR QUESTIONS RELATED TO PARASITE CONTROL OR PURCHASING PRODUCTS, PLEASE CALL US AT (845) 343-1000

TO LEARN MORE ABOUT US VISIT  
TARA-SPAYNEUTER.ORG

## FLEA



**What is it?** The flea is a small, sucking insect that feeds on the blood of a cat or dog. Adult fleas can range from 1-2mm long and are usually a reddish-brown color. Fleas are a nuisance to their hosts, causing an extreme itching sensation. Humans can be bitten, but fleas cannot survive on people long-term. Flea issues are extremely common in this region, especially during summer months.

Typically, an animal with fleas will have “flea dirt” present in their hair. Flea dirt looks like tiny pieces of black dirt, and is actually the dried blood of the cat and excrement of the flea. Fleas and flea dirt can be difficult to see, but can be spotted if the cat or dog’s hair is parted or if you look in the thin, often lighter hair on their belly.

**What complications are caused by fleas?** Flea bites generally appear as a slightly raised, swollen, itchy spot with a single puncture point at the center. The bites often appear in clusters or lines of two bites, and can remain itchy and inflamed for up to several weeks afterwards. Fleas can also lead to hair loss as a result of frequent scratching and biting by your pet, and can cause anemia in extreme flea cases. Some animals suffer allergic reactions to flea saliva resulting in rashes and skin irritation called “flea dermatitis.” If swallowed, fleas can cause tapeworm infections.

**How is it treated?** It is necessary to treat all animals in the household at the same time to eradicate fleas. *Only use products as directed, and for the species they are intended for.* Carefully research any product to ensure it is safe to place on your pet. We recommend systemic treatments such as Frontline Plus, Revolution, and Sentinel. These products may be used one at a time, as needed for your household. Since more than three-quarters of a flea's life is spent somewhere other than on the host animal, it is not enough to treat only the host animal; it is important to also treat the animal's environment. Thorough vacuuming, washing linens in hot water, and simultaneous treatment of all animals in the household is required to eradicate fleas. Dispose of the vacuum bag or vacuum contents immediately after vacuuming. Removing the animal from the home will not rid the home of fleas. Unfortunately, flea issues cannot be solved overnight; it normally takes a few weeks of patience and treatment to rid the home of fleas.

## TICK



**What is it?** The tick is a small, sucking arachnid insect that feeds on the blood of animals. Ticks attach to any host animal, including cats, dogs, and humans.

**Where do they come from?** Ticks may be acquired from an outdoor environment, especially in summer and fall months, and are concerning transmitters of diseases such as Lyme Disease.

**How are they managed?** Ticks may be removed by grasping the tick’s head, directly above the skin, and by pulling the tick straight away from the skin. Frontline Plus is recommended to kill attached ticks and prevent new ticks from feeding on cats and dogs.

## EAR MITE



**What is it?** The ear mite is a tiny white infectious organism barely seen with the naked eye. Ear mites can be a common problem for cats and dogs and are very contagious. Humans cannot get ear mites.

**What complications are caused by ear mites?** Ear mites cause excessive irritation, leading to damaged ear tissue, and eventual secondary bacterial and fungal infections. They cause stress, pain, and discomfort for the pet. *Left untreated, ear mites will cause the animal to experience hearing loss and have permanently damaged ear canals.* Black “gunky” substance is usually visible in the ears.

**How is it treated?** The typical ear mite treatment includes topical ear cleaner (Otomite). If your pet has ear mites, he or she received one free treatment of Otomite during their appointment, but follow-up treatment is required to eliminate the ear mites. A systemic treatment (Revolution) is highly recommended to eliminate ear mites. Feline Revolution may be purchased at regular T.A.R.A. clinic events. Regular gentle cleanings with cotton balls are recommended during this time to help remove the ear mite debris and clear the ear canals. Cotton swabs or Qtips may be used gently, but CAUTION should be taken to avoid cleaning too deeply or further pushing ear mite debris into the ear canal.

## INTESTINAL WORMS

**What are they?** The three main types of intestinal worms found in cats and dogs are tapeworms, roundworms, and hookworms. A less common intestinal worm tapeworms, roundworms, and hookworms may be contracted by your pet from eating an infected mouse, or are transmitted from the mother animal during nursing. They are typically not a realistic concern to human health.



**What are tapeworms?** Tapeworms are white or cream-colored, segmented intestinal worms that can be several inches in length. Pieces of the worm’s body, which look like rice, may be visible in your pet’s stool, in vomit, or in the hair around their tail. They are not always seen. Tapeworms disrupt proper nutrition and can cause upper abdominal discomfort, vomiting, and diarrhea.



**What are roundworms?** Roundworms are white, smooth, spaghetti-like intestinal worms that can be several inches in length. Roundworms may be visible in your pet’s stool, in vomit, or in the hair around their tail. Roundworms disrupt proper nutrition and can cause upper abdominal discomfort, vomiting, and diarrhea. They are not always seen.



**What are hookworms?** The hookworm is a small parasitic nematode that lives in the small intestine of its host. Hookworms are often unseen. Symptoms may include diarrhea, gastrointestinal upset, intestinal blood loss, iron deficiency anemia, protein malnutrition, and excessive drinking. The most significant risk of hookworm infection is anemia (a low red blood cell count). Anemia can be very dangerous or fatal for animals that are very young, very old, or in poor health. The picture on the left includes a penny for size reference.



**What are whipworms?** A dog or a cat can become infested with whipworms if they ingest their eggs. Many dogs are asymptomatic and go undiagnosed and untreated, a severe infected dog will experience a loss of appetite, dehydration, diarrhea, anemia, and could potentially die. A monthly dose of Sentinel will treat any potential whipworm infestation in your dog.